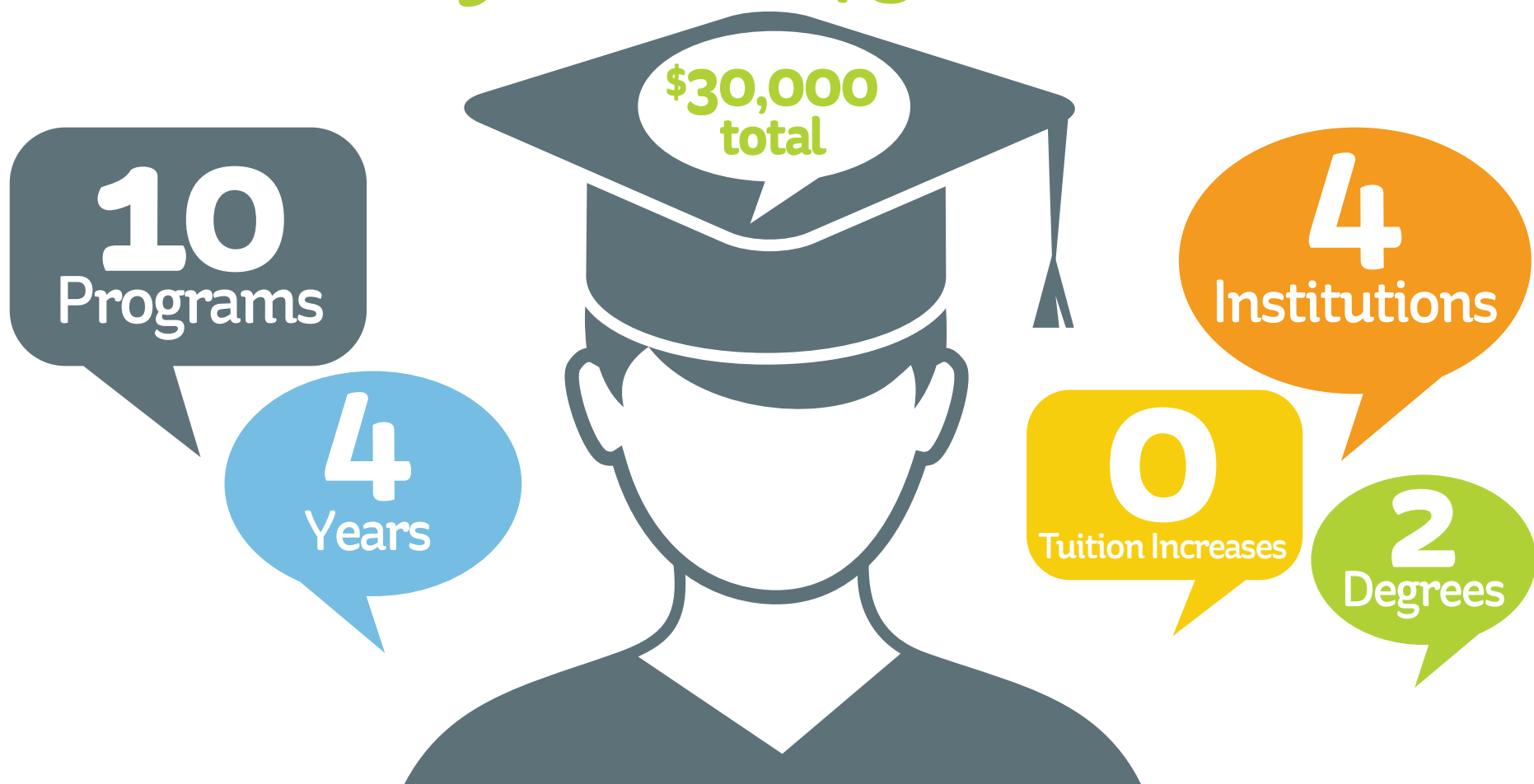


Enroll Today for The \$30k Commitment



The Benefits

The versatility of Central Massachusetts’ public higher education institutions gives students a range of affordable options. Earn 2 degrees in 4 years in your chosen field for \$30,000 total, making it one of the most affordable options in the entire Northeast.

In order to benefit you must be:

- full time
- non-residential
- in-state
- college ready

Your cost may be further reduced if you are eligible for financial aid.





The Workforce

These four institutions aim to develop students’ career potential while meeting the workforce needs of Massachusetts. The programs offered support economic growth and vitality throughout our region.

The Program

You can now lock in the cost of your associate and bachelor’s degrees at \$30,000 total—and get the education and training you need for a high-demand career.

Start your educational path at Mount Wachusett Community College or Quinsigamond Community College, earn an associate degree, and transfer to Fitchburg State University or Worcester State University.

Degree	Earn Your Associate Degree		Complete Your Bachelor's Degree	
				
Biological Sciences with transfer to Biology		✓		✓
Biological Sciences with transfer to Chemistry		✓		✓
Biotechnology		✓	✓	
Business Administration	✓	✓	✓	✓
Computer Science	✓		✓	✓
Criminal Justice	✓	✓		✓
Early Childhood Education	✓	✓	✓	
Elementary Education	✓	✓	✓	
Pre-Pharmacy with transfer to Biology	✓			✓
Pre-Pharmacy with transfer to Chemistry	✓			✓

The Commitment

Students commit to:



30 credits per year

graduating in 4 years

Schools commit to:



locking in a low rate of \$30,000 total cost of 4 years

2 degrees in 4 years

offering high interest programs that are high demand in the workforce

aligning educational options with regional needs

Get Started

Learn more about the \$30k Commitment by clicking or calling:



160 Pearl Street
Fitchburg, MA 01420
(800) 705-9692
fitchburgstate.edu/30k
30k@fitchburgstate.edu



670 West Boylston Street
Worcester, MA 01606
(508) 854-4262
QCC.edu/30k
30k@qcc.mass.edu



444 Green Street
Gardner, MA 01440
(978) 632-6600
mwcc.edu/30k
30k@mwcc.edu



486 Chandler Street
Worcester, MA 01602
(508) 929-8018
worcester.edu/30k
30k@worcester.edu